

Get wild about Devon

at Buckland Tout Saints Hotel

Goveton, Kingsbridge, Devon TQ7 2DS

t 01548 853055

e enquiries@bucklandtoutsaints.co.uk

w www.bucklandtoutsaints.co.uk



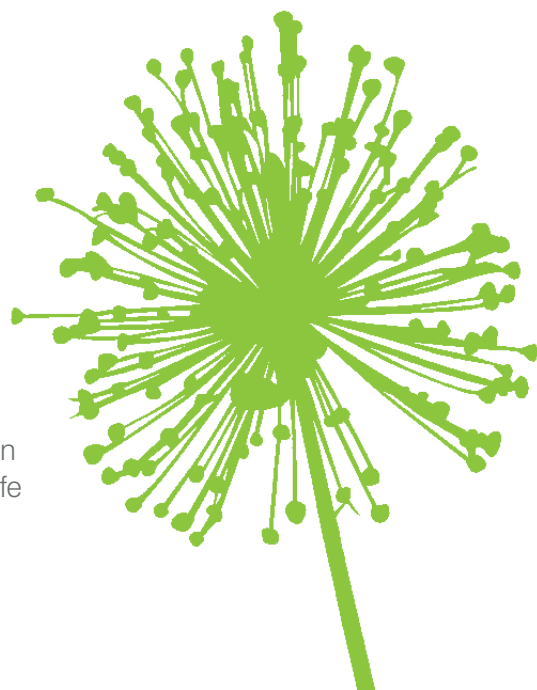
Buckland Tout-Saints hotel can be found in the heart of the South Devon countryside just outside Kingsbridge and not far from the popular sailing centre of Salcombe, the historic town of Dartmouth and the medieval town of Totnes.

This luxury country house Hotel is delightfully secluded amidst four and a half acres of beautifully tended gardens. There is also a woodland garden where there are many fine specimen trees and a plethora of flora and fauna.

Get wild about Devon

is a wildlife appreciation scheme for tourism businesses in Devon who are serious about proactively improving wildlife as part of their business. The scheme is supported by Devon County Council on behalf of Visit Devon.

www.visitdevon.co.uk



Buckland Tout-Saints Hotel

www.visitdevon.co.uk

Look out for greater spotted woodpecker, green woodpecker, treecreeper and nuthatch, blue, coal and long tail tit in the woodland.

The ground flora includes snowdrops, primroses, bluebells, celandines, pignut, ground elder and red campion.

Large Oak and Beech trees

Buckland Tout-Saints Hotel

Formal Pond and Garden

Old Dovecote

Rhododendron and Laurel

Buzzards soar on the thermals or look for one perched in the trees. Look out for the characteristic 'flap, flap, glide' of the sparrowhawk or a hovering kestrel. Listen for tawny owl with thier 'kewick, twooh' in the evening.

Flitting amongst the trees, birds such as blue, great, coal and long tail tit along with blackcap and chiffchaff can be seen. Listen to blackbird, songthrush and wren singing.

Whitethroat, yellow hammer and dunnock can be heard singing in the hedgerows and butterflies to be seen include speckled wood, orange tip, gatekeeper, comma, red admiral and tortoiseshell. Look for flocks of linnets and goldfinches feeding on the grass seeds in the neighbouring pasture.

Common blue, blue tailed and small red damselflies as well as emperor and golden ringed dragonfly can be seen around the pond and look for frogs, toads and palmate newts.

Flocks of redwing and fieldfare can be seen feeding in the fields and woodland in the winter.

Species List

at Buckland Tout-Saints Hotel

Trees & Shrubs

Ash
Beech
Black Alder
Blackthorn
Buddleia
Elder
Field Maple
Hawthorn
Hazel
Holly
Oak
Rowan
Scots pine
Silver Birch
Sweet chestnut
Sequoia
Wild cherry
Willow

Plants

Annual meadow grass
Bluebell

Bramble
Burdock
Cleavers
Cocksfoot
Ground Ivy
Giant hogweed
Common dog violet
Cow parsley
Creeping buttercup
Creeping Thistle
Enchanters nightshade
Honeysuckle
Greater plantain
Greater sedge
Herb Robert
Honeysuckle
Herb Bennet
Germander speedwell
Ivy
Lord and ladies
Nettles
Primrose
Red campion
Snowdrop

Timothy
Yorkshire fog

Ferns

Hard fern
Harts tongue fern
Lady fern
Male fern
Scaly male fern

Mammals

Badger
Bank vole
Common shrew
Field mouse
Hedgehog
Mole
Pipistrelle bat
Rabbit
Stoat
Wood mouse

Birds

Blackbird

Blackcap
Blue tit
Buzzard
Carrion crow
Chaffinch
Chiffchaff
Coal tit
Duncock
Fieldfare
Goldfinch
Great tit
Greater spotted woodpecker
Greenfinch
House martin
Heron
House sparrow
Jackdaw
Jay
Kestrel
Linnet
Long tail tit
Mistle thrush
Pied wagtail

Raven
Redwing
Robin
Rook
Skylark
Song thrush
Sparrowhawk
Swallow
Swift
Tawny owl
Whitethroat
Wren

Reptiles & Amphibians

Common lizard
Frog
Grass snake
Palmate newt
Slow worm
Toad

NB This is not a comprehensive list

Wildlife places of interest nearby

Slapton Ley National Nature Reserve (NNR, SSSI) – OS Map: SX 827 443

The largest freshwater lake in the southwest, it is separated from the sea by the narrow shingle ridge known as Slapton sands. There is plenty to see, waterfowl include tufted duck, coot, golden eye, great crested grebe and mammals include badger, otter, dormouse and many species of bats. Slapton Bridge, which divides the two leys, is a great vantage point to watch the plethora of wildlife that the reserve supports. **For more information Tel: 01548 580685.**

Beesands – OS Map: SX 819 410

The small village of Beesands sits behind a mile long stretch of shingle beach. There is a small freshwater lagoon 'Widdecombe Ley' which is an important wildlife site. There is a bird hide which is open to the public from which to watch the wildfowl and other wildlife that visits this ley. **For more information contact Torbay Coast and Countryside Trust Tel: 01803 882619.**

Start Point – OS Map: SX 821 374

A perfect spot for watching the sun go down looking at the lighthouse and the stunning scenery. It is also a good place to watch the summer migrant birds such as willow warbler, chiffchaff and wheatear arriving. March and April is the best time for the migrants, however all year round interest includes peregrine, kestrel, raven and circl bunting. Look out on to the rocks known as Pear Tree Point and you may see a seal or two. **For more information Tel: 01803 882619.**

Hallsands – OS Map: SX 817 388

Above the ruined village of Hallsands, by the row of old fishing cottages is a kittiwake colony, watch these noisy birds fly to and from their nesting site and look out for fulmars in this area too.

Prawle Point – OS Map: SX 741 373

Coastal headland south of the village of East Prawle, great views and one of the best bird migration points. Spring and autumn are the best time. Circl bunting breed in the area.